



Anurag Barua

First Steps in SAP® Fiori

- ▶ SAP Fiori Basics
- ▶ Technical Deep-Dive
- ▶ Creating a Fiori App
- ▶ SAP Standard Fiori Apps

Table of Contents

1	History of end user experience with SAP	11
1.1	History of input devices and user interfaces	12
1.2	SAP and the user interface	14
2	What ails traditional SAP user interfaces?	23
2.1	An illustration of interaction with SAP GUI	24
2.2	What does this all mean?	30
3	Personalization in SAP systems	33
3.1	Personalization: An example	33
3.2	Personalization via user parameters	38
3.3	Personalization and GuiXT	41
4	SAP Fiori: An overview	47
4.1	Why SAP Fiori?	50
4.2	Cost of SAP Fiori	51
4.3	The waves of SAP Fiori	53
4.4	SAP Fiori 2.0	55
5	SAP Fiori: A technical deep dive	57
5.1	Categories of SAP Fiori apps	57
5.2	SAP Fiori architecture	61
5.3	Prerequisites for SAP Fiori	63
5.4	Key technical components of SAP Fiori	64
5.5	SAP Fiori and S/4HANA	66

6	Installing and configuring SAP Fiori	69
6.1	SAP Fiori deployment options	69
6.2	Installing SAP Fiori	71
6.3	Configuring SAP Fiori (Gateway activities)	73
6.4	Configuring SAP Fiori (launchpad activities)	76
7	Rapid implementation of SAP Fiori	81
7.1	SAP Fiori rapid-deployment solutions: Overview	81
7.2	How do you find the right SAP Fiori rapid-deployment solution?	84
8	The SAP Fiori launchpad	87
8.1	Introduction to the SAP Fiori launchpad	87
8.2	Features of the launchpad	88
8.3	Launching the launchpad	90
8.4	SAP Fiori launchpad deployment options	92
9	SAP Screen Personas	95
9.1	Overview	95
9.2	Similarities and differences between SAP Fiori and SAP Screen Personas	97
10	Custom SAP Fiori development and enhancements	99
10.1	Why do you need to extend SAP Fiori apps?	100
10.2	Skill sets needed for SAP Web IDE development	101
10.3	SAP Web IDE: Introduction	102

10.4	Accessing the SAP HANA Cloud Platform	102
10.5	Leveraging SAP Web IDE to enhance a pre-delivered SAP Fiori app	112
11	Putting together an SAP Fiori business case for your organization	121
11.1	What gaps can SAP Fiori potentially fill?	121
11.2	Customer (ABC) background	123
11.3	Selecting an SAP Fiori use case	124
11.4	Searching for the relevant app	126
11.5	Implementing the SAP Fiori business case	130
11.6	SAP Fiori deployment options	131
12	Implementing SAP Fiori in your business	135
12.1	Self-deployment of your SAP Fiori business case	135
12.2	Configuring the PO approval app	139
13	SAP Fiori implementations— lessons learned	149
14	Resources and references	155
A	The Author	159
B	Index	160
C	Disclaimer	161

2 What ails traditional SAP user interfaces?

Initially, I wanted to call this chapter “What ails SAP GUI?” because SAP GUI is synonymous with SAP user interfaces. SAP GUI is used by millions of users spanning companies of all sizes, straddling all kinds of industries, and across all continents. It is therefore one of the most widely used and recognized user interfaces in the world. There are others, such as Web GUI, NetWeaver Business Client, etc. However, these other technologies generally fall within the “Plan B” or “Plan C” realm and SAP GUI is considered the default interface.

To return to my question: using SAP GUI as the primary manifestation of the SAP user interface, let us take a look at its less pleasing aspects:

- ▶ For any standard transaction such a purchase order, sales order, invoice, etc., the standard SAP screens contain hundreds of fields, many of which are of little to no relevance to a user.
- ▶ The number of tabs and fields leads to excessive clicking or navigation, which is not productive.
- ▶ The options for customizing/personalizing these screens are not straight-forward or easy for the casual user. In some cases, coding is required to customize the screens, which is not something you can expect from even a power user.
- ▶ The overall user experience with SAP GUI is generally considered to be less than pleasant.

This is a statement that I have been hearing for many, many years, even when “user experience” was not as prominent a factor as it is today. Dark gray screens have become synonymous with SAP GUI and for years, users have been complaining about the unsatisfactory experience. Although this is a qualitative assessment, it is hard to argue with it.

- ▶ There is no direct way to access SAP GUI via mobile devices. Suffice to say, SAP GUI was conceived long before mobile computing became the craze it is today.

2.1 An illustration of interaction with SAP GUI

I will now take you through the steps of creating a purchase order (PO) using the standard SAP GUI interface to illustrate the points made above.

2.1.1 The purchase order user interface in SAP GUI

To illustrate the need for a more simplified user interface, let's take a look at one of the most popular SAP transactions—creating a purchase order (transaction ME21N). A standard purchase order has two major components: a header and line item(s). Let us look at the header section first. Figure 2.1 shows the initial PO header screen in an ERP 6.0 system running on SAP GUI 7.40.

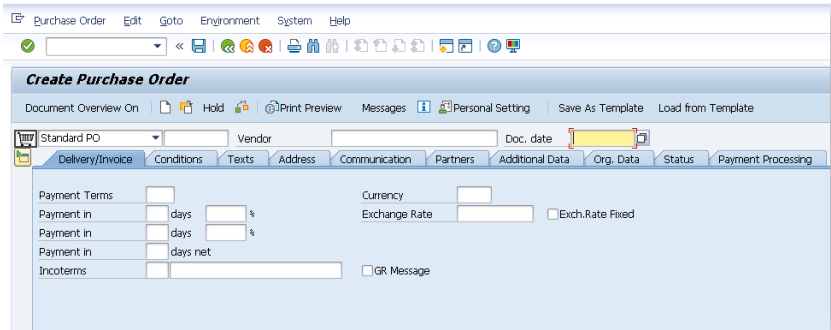


Figure 2.1: PO header screen in an ERP 6.0 system

While it may not be immediately obvious, the header section has 10 tabs each with a large number of fields. Figure 2.1 shows the fields on the DELIVERY/INVOICE tab. Now let's take a peek at the next tab, TEXTS.

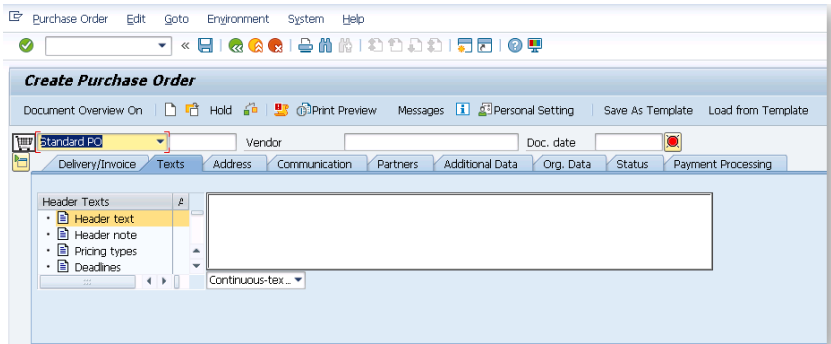


Figure 2.2: TEXTS tab in the PO creation transaction

Figure 2.3 shows the third tab, CONDITIONS.

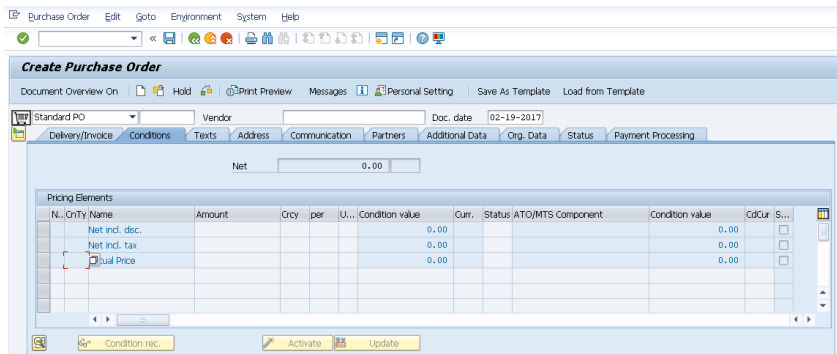


Figure 2.3: CONDITIONS tab in the PO creation transaction

Let us now move to the fourth tab, ADDRESS, as shown in Figure 2.4. As you can see, there are a lot of fields for entering data pertaining to the address of the vendor.

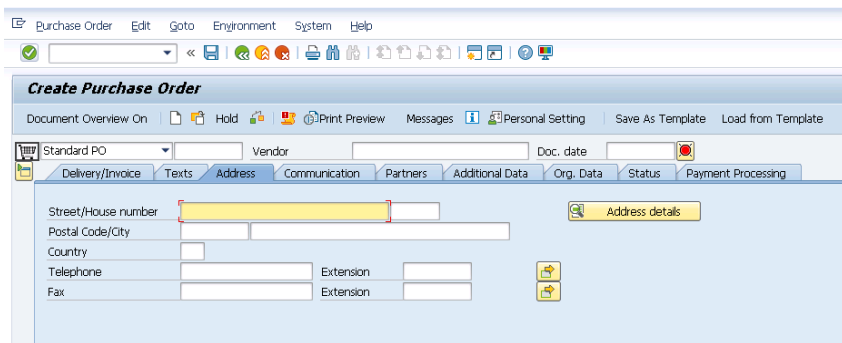


Figure 2.4: ADDRESS tab in the PO creation transaction

Figure 2.5 shows the fifth tab, COMMUNICATION. This tab contains five fields for data entry related to how you communicate with your vendor.

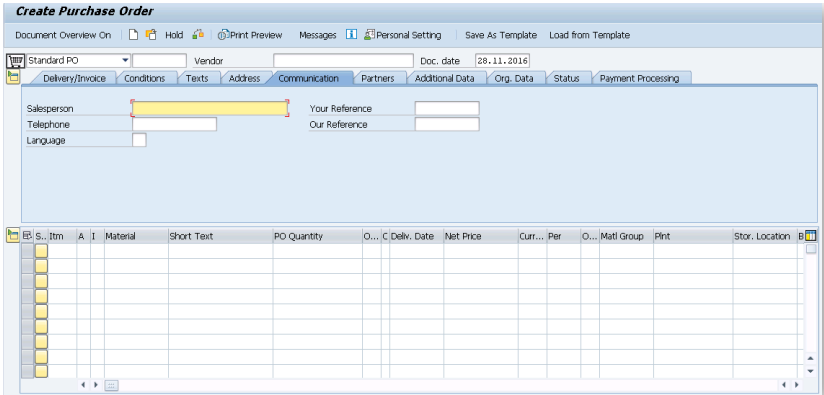


Figure 2.5: COMMUNICATION tab in the PO creation transaction

We now move on to the next tab, PARTNERS, as shown in Figure 2.6.

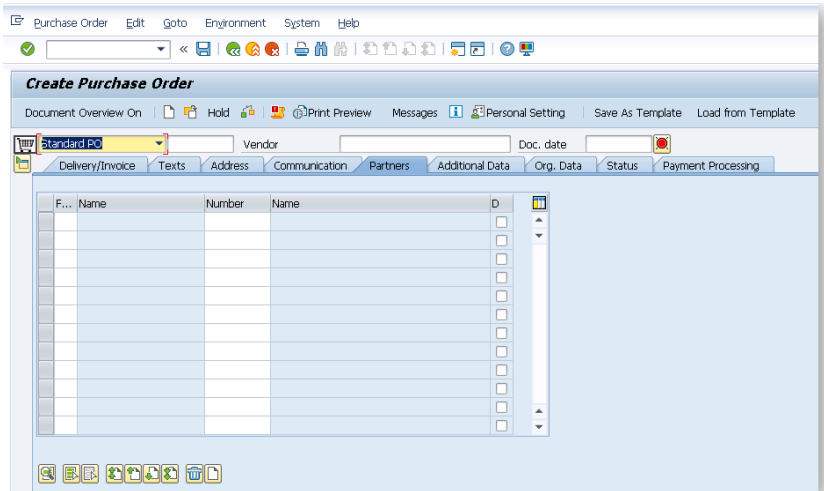


Figure 2.6: PARTNERS tab in the PO creation transaction

B Index

A

ABAP 58

B

best practices 149
Business Application
 Programming Interface
 (BAPIs) 70

F

field status variant 33,
 37
Frog GUI 19

G

GuiXT 41

H

HANA Cloud Platform
 92, 102

K

keyboard. 13

L

launchpad 50, 76, 87

M

mainframes 12
Model View Controller
 (MVC) 115

O

ODdata 64

P

personalization 33, 41,
 95
PID 38, 40

R

R/2 16, 17
rapid-deployment
 solutions 132
rapid-deployment
 solutions (RDS) 81
REST 65

S

S/4HANA 66
SAP HANA 57
SAP NetWeaver
 Gateway 65
SAP Screen Personas
 95
SAP UI 5 65
SAP UI5 49
service-oriented
 architecture (SOA) 20

W

waves 53
Web IDE 99