

Sydney McConnell & Martin Munzel

# First Steps in SAP®

Second, Extended Edition

- ▶ Learn how to navigate in SAP ERP
- ▶ Watch instructional videos with simple, step-by-step examples
- ▶ Learn about transactions, organizational units, master data
- ▶ Get an overview of SAP products and new development trends

# Table of Contents

<b>1</b>	<b>Introduction to SAP and standard ERP software</b>	<b>11</b>
1.1	What is an ERP system?	11
1.2	A brief history of SAP	12
1.3	Advantages and disadvantages of standard software	17
<b>2</b>	<b>SAP ECC basics</b>	<b>21</b>
2.1	Navigation/User interface	21
2.2	Integration	34
2.3	Transactions	46
2.4	Organizational units	70
2.5	Master data	77
2.6	Country and industry solutions	81
2.7	Introduction to ABAP	82
2.8	Security and authorizations	87
2.9	Enhancement packages	87
<b>3</b>	<b>SAP Products Overview</b>	<b>89</b>
3.1	Solutions for small to midsize businesses	89
3.2	Business Intelligence (BI)	92
3.3	Customer Relationship Management (CRM)	103
3.4	Supplier Relationship Management (SRM)	106
3.5	Supply Chain Management (SCM)	106
3.6	Governance, Risk, and Compliance (GRC)	108
3.7	NetWeaver	110
3.8	SuccessFactors	112
3.9	New development trends	116

<b>A About the Authors</b>	<b>134</b>
<b>B Index</b>	<b>136</b>
<b>C Disclaimer</b>	<b>141</b>

## 2 SAP ECC basics

In this chapter, we will start by discussing SAP ECC's user interface and how to navigate the system, including some innovations in the SAP ECC user interface. We will then delve into more details on how SAP ECC integrates and manages business processes. Following that, we will review SAP transactions, modules, and SAP's solutions for different countries and industries. We will walk through an overview of how SAP organizes information through organizational units and master data. Finally, we will walk through an introduction to ABAP (SAP's programming language), security and authorizations, and enhancement packs.

### 2.1 Navigation/User interface

SAP ERP is a large software system with a large number of transactions and a variety of ways to navigate around in them. In this chapter, we are going to show you the basics of getting around in ERP. First, you will learn how to log on to the system. After that, we will demonstrate how to use the menu bar, check the status bar, and use the menu tree. You will also learn about different ways to access your frequently-used business transactions and how to disconnect from the system.

#### 2.1.1 Logging on

As was mentioned previously, SAP is a client/server system that is accessible to many different users at the same time. The system itself runs on a database located on one or more *servers*. A server is a computer that provides services to other computers called *clients*. In the case of an SAP system, the services provided consist of operating a database, running the SAP programs on it, and allowing the clients to access the SAP system.

## Connection to the SAP server



You can only work with the SAP system when your computer, one of the clients, is connected to one of the servers via a network (this can be your local company network or an internet connection). Whatever work you do in the SAP system will be stored on the server, not your own computer. This also implies that you must save your work before disconnecting from the server, or it will get lost.

To log on to your SAP system, use the program SAP Logon or SAP Logon pad (see Figure 2.1). In the SYSTEMS tab, you will find all of the SAP systems in your company available to you (in our example, there is currently only one). Choose the system you want to connect to and click LOG ON. You can also double-click on the system description.

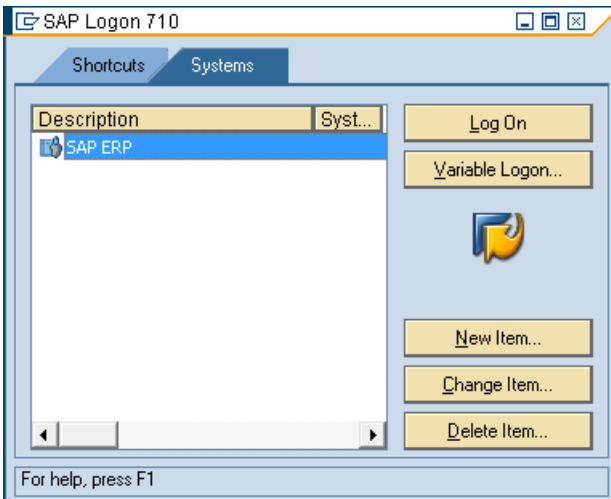


Figure 2.1: The SAP logon pad

This will open the SAP log on screen, which asks for your log on data (see Figure 2.2). The first entry you must choose is the *client*. A client is the highest organizational unit in the SAP system and is used to keep different companies separated from each other. We will tell you more about organizational units in Section 2.4. In this example, we choose to log on to client. Next, you must enter your user name. You usually receive your user name from the SAP administration team in your IT department, along with your initial password that you enter immediately

below the user name. Finally, choose the system language in which you would like to work. In this case, we entered EN for English.

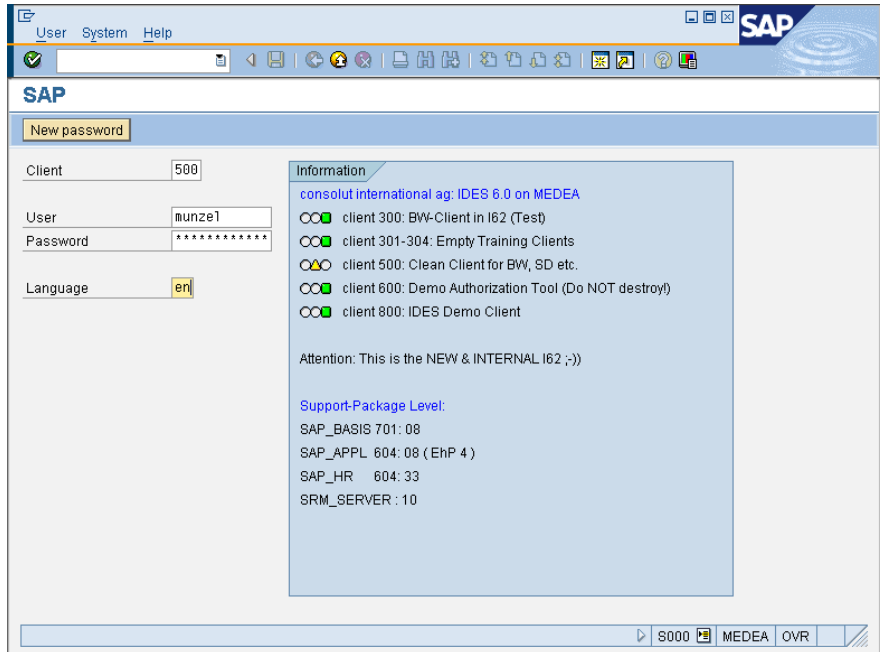



Figure 2.2: The SAP log on screen

Once you have completed entering the log-on data, either hit the return key on your keyboard or press the  button at the top left corner of the screen.

### Wrong password



If you enter the wrong password three times in a row, the system will automatically block your user account. You will have to check with your system administration to have your account unlocked.

If you are logging on to the system for the first time, you are required to change your password immediately (see Figure 2.3). Enter your new password in the corresponding field and once more in REPEAT PASSWORD. Please note that passwords in SAP are case-sensitive (which means the system differentiates between uppercase and lowercase letters).

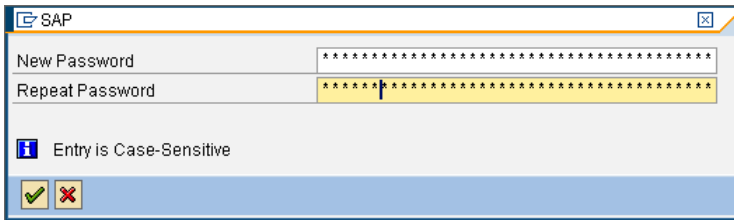


Figure 2.3: Password prompt

Once you have completed logging on to the system, you are taken to the SAP main screen. You are now ready to start working in SAP ERP.

## 2.1.2 The SAP ERP user interface

The SAP main screen is called SAP Easy Access (see Figure 2.4). It consists of a number of different elements that we will explain to you now.

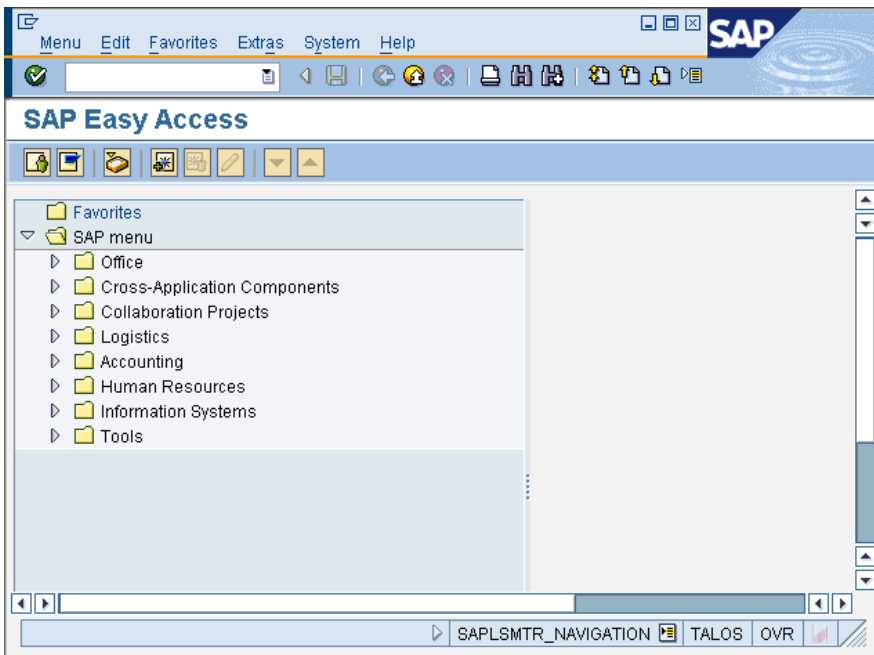


Figure 2.4: SAP Easy Access

At the top of the screen, you can see the menu bar. Out of the various entries in the menu, the SYSTEM and HELP menus are always available. In the SYSTEMS submenu (see Figure 2.5), you can change your password (using the USER PROFILE submenu) or set default values for a number of parameters, such as company code, date format, decimal notation, and default printer.

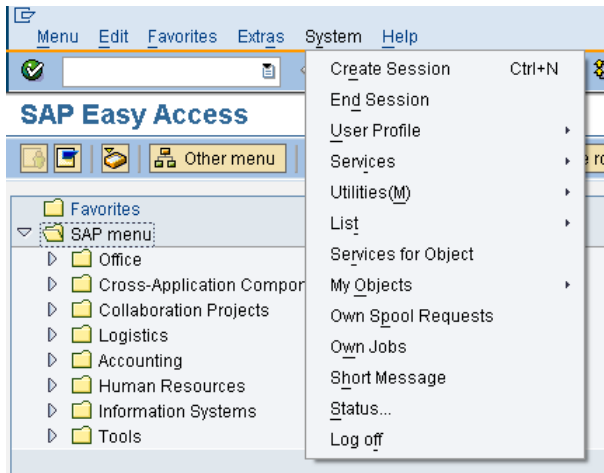


Figure 2.5: The system menu

Using the HELP submenu, you can call up SAP online help. Choose HELP • APPLICATION HELP or HELP • SAP LIBRARY to browse this library for detailed information on the entire SAP system (see Figure 2.6).

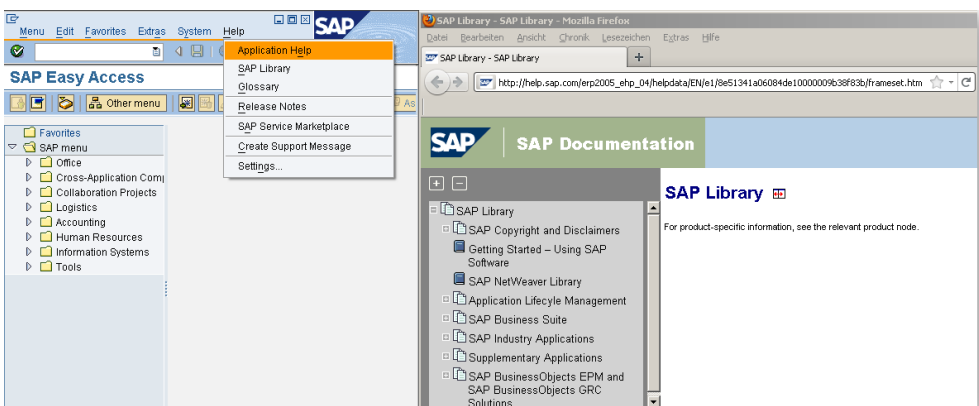


Figure 2.6: Help • SAP Library



# B Index

## A

- ABAP (Advanced Business Application Programming) 14, 83
- Access Control 108
- Account-based CO-PA 58
- Accounting 51, 68
- Accounts payable (AP) 54
- Accounts receivable (AR) 53, 64
- Activity-based costing (ABC) 103
- Advanced Planning and Optimization (APO) 106
- Alert Management System 112
- Analysis Office 97
- Analytical apps 33
- APO 106
- Audit control 102
- Authorizations 87, 109
- Automatic Payment Transaction 42
- Availability check 66

## B

- Batch processing 13
- Benefits and payroll 113
- Best practices 19
- BEx (Business Explorer) 97, 98
- BEx Analyzer 94
- BEx Broadcaster 94
- BEx Query Designer 94
- BEx Web 94
- BI 121
- Bill of material (BOM) 63
- Billing and Revenue Innovation Management 104

- BPC 102
- BPC for Microsoft 102
- BPC for NetWeaver 102
- Business ByDesign 91, 129
- Business Explorer (BEx) 94
- Business Objects 119
- Business One 89
- Business Planning and Consolidation (BPC) 101, 119
- Business Warehouse (BW) 14, 92, 93, 119
- BusinessObjects 95

## C

- Characteristics 94, 103
- Chart of accounts 53
- CJ20N 68
- Claus Wellenreuther 13
- Client 21, 70
- Client/server 13
- Cloud 91, 119
- Collaborative Quote to Cash 104
- Collaborative Sales Force Automation 104
- Column-based 117
- Column-based database 116
- Command line 28
- Commerce 103
- Company code 49, 72, 76
- Compliance 109
- Conditions 64
- Configuration 37, 38, 73, 83
- Configuration menu 74
- Consolidations 102
- Controlling (CO) 51, 120

Controlling area 71  
CO-PA See Profitability analysis  
Core Human Resources and  
Payroll Solutions 113  
Cost center accounting 56  
Costing-based CO-PA 58  
Country solutions 81  
Credit management 66  
CRM 103, 104  
Crystal Reports 96  
Currency 48, 72  
Customer 78  
Customer exit 83  
Customer master 43  
Customer master data 64  
Customer Relationship  
Management (CRM) 103  
Customs 109

## D

Dashboard 95, 97  
Data visualization 98  
Data warehouse 93  
Database 13, 47, 116  
Delivery 45  
Delivery note 44  
Design Studio 97  
Dietmar Hopp 13  
Dimensions 95, 103  
Disclosure Management 103  
Document Relationship Browser  
52

## E

E-commerce 103  
Enhancement package 88  
Enterprise data warehouse (EDW)  
92, 95  
Enterprise Performance  
Management (EPM) 101

Enterprise Workspaces 111  
ERP 12, 18  
European Excise Movement and  
Control System (EMCS) 110  
Excel 97, 98  
Excel add-in 94, 101  
Export management 110  
Extended Warehouse  
Management 107  
Extensions 99

## F

F110 42  
Fact sheets 33  
Favorites 29  
FB50 48  
Financial accounting (FI) 48, 51,  
120  
Fiori 32, 33, 125, 127  
Fiori apps 123  
Fixed asset 55  
Flash 97  
Flavor Gallery 129  
Flavors 129  
Forecasting 102  
Four-eyes principle 38

## G

GAAP 103  
General ledger 51, 53, 54, 55  
Global Trade Services (GTS) 109  
Goods receipt 40  
Governance, Risk, and  
Compliance (GRC) 108  
GTS 110

## H

HANA 116, 119, 120, 127  
Hans-Werner Hector 13  
Hasso Plattner 13

HTML5 97  
Human Capital Management (HCM) 112  
Human resource (HR) administration 113  
Human Resources (HR) 69, 112

## I

IFRS 103  
IMG 74  
IMG (Implementation Guide) 74  
Implementation 37, 38  
Industry solutions 16, 81  
InfoCubes 93  
InfoProviders 93  
Infrastructure 91  
In-memory 116  
Innovations 116  
Integration 52  
International Traffic in Arms Regulations (ITAR) 110  
Inventory 62  
Inventory valuation 56  
Invoice 45

## K

Key figures 94  
Key performance indicators (KPIs) 33  
Klaus Tschira 13

## L

Language 81  
Lifecycle Management 112  
Logistics 59, 68  
Lumira 98, 99  
Lumira Resources 100

## M

Mainframe 12, 13

Marketing 104  
Marketing with Speed and Agility 104  
Master data 36, 46, 47, 49, 57, 69, 78  
Master Data Management for Commerce 104  
Master data record 78  
Material master 43, 60, 121, 124  
Material type 59  
ME21N 39  
ME51N 39  
Measure 95  
Menu bar 25  
MIGO 40  
MIRO 41  
MM 62  
Mobile 15, 97, 98, 123  
Module 11, 15, 36  
MRP 39, 63  
MultiProvider 93

## N

NetWeaver 14, 97, 110  
NetWeaver Business Client (NWBC) 129  
NetWeaver Lifecycle Management 112  
NetWeaver Portal 110, 111  
NetWeaver Portal workspace 111  
Networks 68  
NWBC 129

## O

Omni-Channel Commerce Management 104  
Order to cash 43  
Organization data 47  
Organization structure 68  
Organizational management 113

Organizational structure 17, 49,  
71, 73, 74  
Organizational unit 36, 37, 49, 73,  
87

## P

PA See Profitability analysis  
Parallel ledgers 53, 55  
Parallel processing 116  
Parameters 25, 38, 79  
Payment method 42  
Payment processing 64  
Payroll 70, 113  
Personalizations 129  
Personas 32, 127, 129  
Planning 102  
Plant 72, 73  
Portal Wikis 111  
PowerPoint 97  
Pricing 64  
Pricing procedure 64  
Procure-to-pay 38  
Product cost controlling 57  
Production planning 63  
Production variances 56  
Profitability analysis 58  
Profitability and Cost Management  
(PCM) 103  
Programming 83  
Project Builder 68  
Project Planning Board 68, 69  
Project System (PS) 67  
Projects 68  
Purchase order 39  
Purchase requisition 39, 61  
Purchasing 61  
Purchasing organization 73

## Q

Quality Management (QM) 67

## R

R/3 13  
Real-time analytics 117  
Real-Time Customer Insights 104  
Real-time data analysis 121  
referral management 114  
Routing 63

## S

S/4 HANA 120  
SAAS (software as a service) 91  
Sales 104  
Sales and Distribution (SD) 64  
Sales order 44, 64, 125  
Sales organizations 73  
Sales Performance Management  
104  
Sales process 64  
Sales, inventory and operations  
planning 107  
SAP Business Suite 4 SAP HANA  
120  
SAP HANA 116  
SAP Solution Manager 112  
Scalability 18  
SCM 106  
Segregation of duties 87, 108  
Selling Through Contact Centers  
104  
Server 21  
Settings menu 28, 29  
SFW5 88  
Simple Finance 121, 123  
Small business 89  
Special Purpose Ledger 53  
SPRO 74

SRM 106  
Standardization 18, 19  
Status bar 26, 28  
**SuccessFactors** 112, 113, 114  
SuccessFactors Learning 115  
SuccessFactors Performance &  
Goals 116  
Succession & Development 116  
Supplier Relationship  
Management (SRM) 106  
Supply Chain Management (SCM)  
106  
System function bar 26

## T

Talent Management 114  
Technical names 28  
Tiles 129  
Timekeeping 70  
Training management 70  
Transaction 37, 46, 48  
Transaction code 28  
Transaction data 47  
Transactional app 125  
Transactional applications 33

## U

Unique Customer Experiences  
104

Upgrade 87  
User exit 19, 83  
User experience 98  
User interface 13, 27, 32, 122  
**User Interface** 121  
User profile 25  
UX 123  
UX Design Services 32, 34

## V

VA01 43, 125  
Vendor 78  
Visualization 96  
VL01N 44

## W

Warehouse Management 107  
Web Intelligence (WebI) 95  
Work breakdown structure (WBS)  
67  
Work packages 68

## X

XBRL 103  
Xcelcius 97